



## Kryon Systems Ltd.

---

**Kryon Systems welcomes you to a new world of software interaction.  
We revolutionize the way people use software and applications.**

How many times have you been stuck with a question on how to do something on one of your software applications? What if you had a tool that can provide an answer in real time?

With more than 1 Billion PC's installed and operating worldwide the amount of tasks we have to perform each day using software applications is staggering. Trying to remember and control all the various functions, features and applications is limited at best. Current solutions for the problems facing software users can be expensive, time consuming and do not always provide the answers in real time on real data.

Kryon Systems Ltd. created a unique solution: LEO (Learn, Evolve, Operate). LEO performs the action for the user **in real** time, upon request on the user's own computer environment.

Ever been stuck doing something in Excel? For instance how to convert rows into columns? This is where Leo comes into play. You ask LEO a question (in free text); LEO identifies the answer and begins the action for you. That is, your mouse moves and clicks for you during the entire set of transactions, while asking you to interact during decision points, if needed. LEO works on **any application** (currently on Windows).

Kryon Systems launched Leo at DEMOfall09, for more information please visit us:

[www.kryonsystems.com](http://www.kryonsystems.com)

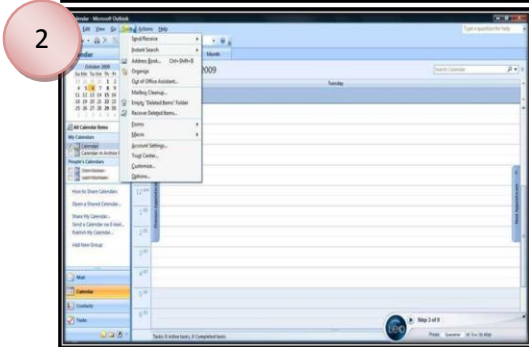


## Example: The Leo Experience

### *Adding an Additional Time Zone to your Outlook Calendar*



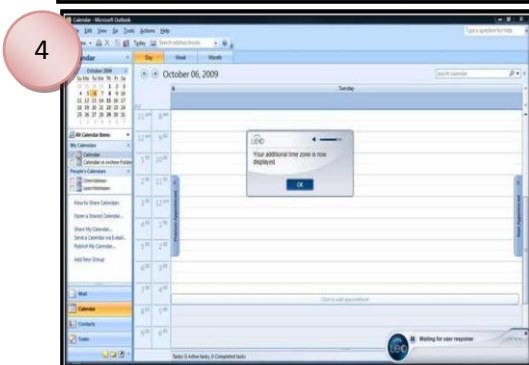
The user would like to know how to add another time zone to Outlook calendar. He/she types the query in the Leo search bar. Leo retrieves results and displays them in the results window. The user chooses the relevant answer and clicks *Start*.



Once the user has pressed *Start*, Leo moves the mouse instead of the user and clicks on the menu options that open the dialog required for adding a second time zone.



Leo executes the task by itself and interacts only when the user has to make a choice or a decision. Leo opens up the dialog boxes to reach the time zone options. At the decision point, Leo asks the user to check the “show an additional time zone box” and the required time zone.



Leo completes the action and the new time zone bar is now in place in the user's calendar.